



SHMOO

REPLACE SCREEN FASCIA

REPLACE SCREEN FASCIA



Equipment Needed:

- 7mm Hex Socket Wrench
- Phillips screwdriver

6 DOOR LOOM / EARTH WIRE

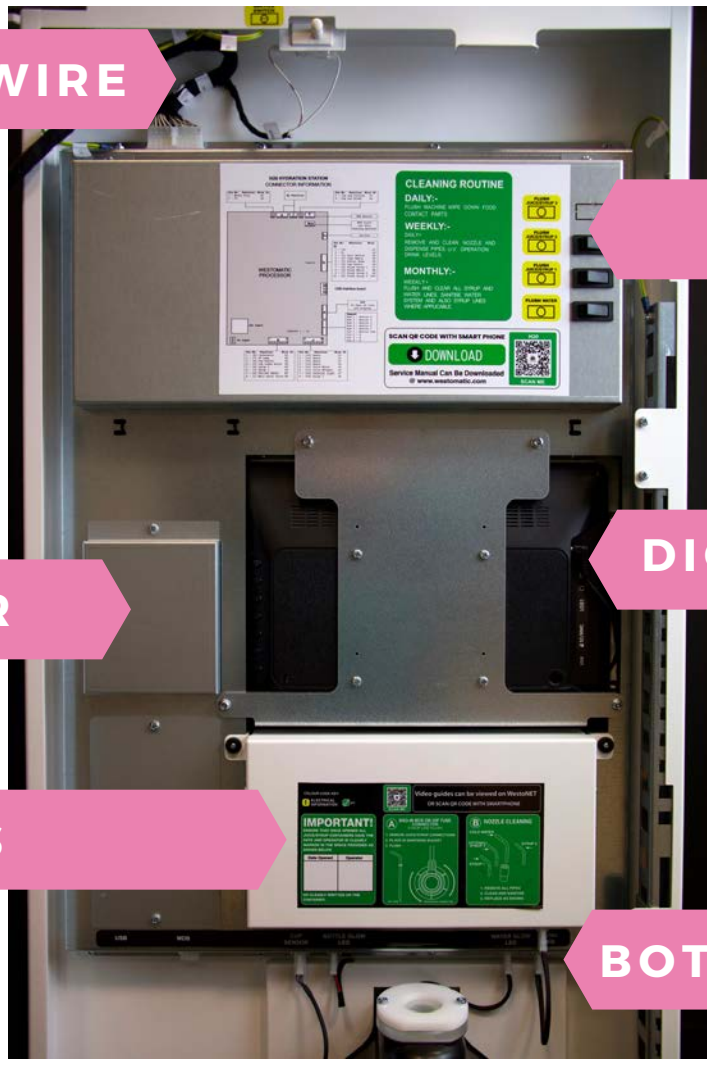
5 FLUSH COVER

3 LCD SCREEN COVER

4 DIGITAL MEDIA SCREEN

2 LIGHTBOX / DECALS

1 BOTTLE STATION LOOMS



1 - REMOVE LIGHTBOX



Unscrew washers →



Remove menu
LED loom

Remove Lightbox →



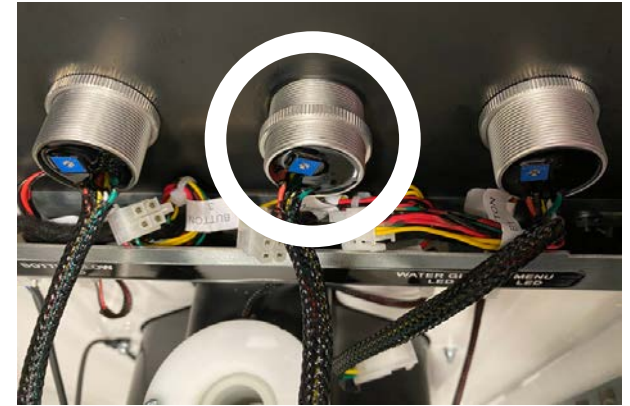
2 - REMOVE BUTTONS



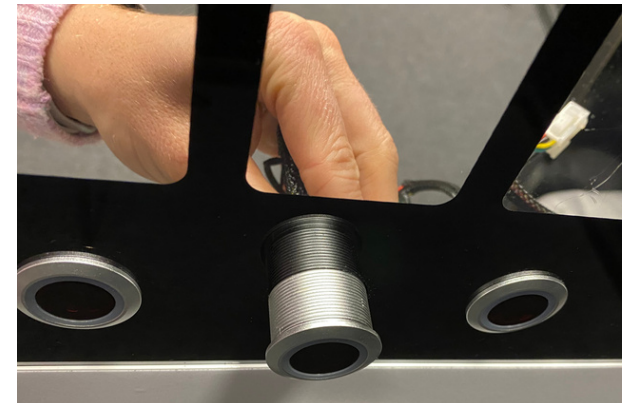
Disconnect Looms x 4



Unscrew Washer x 4



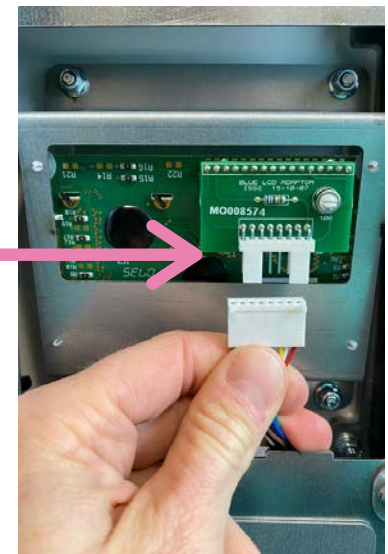
Remove Button
from Front



3 - REMOVE LCD COVER



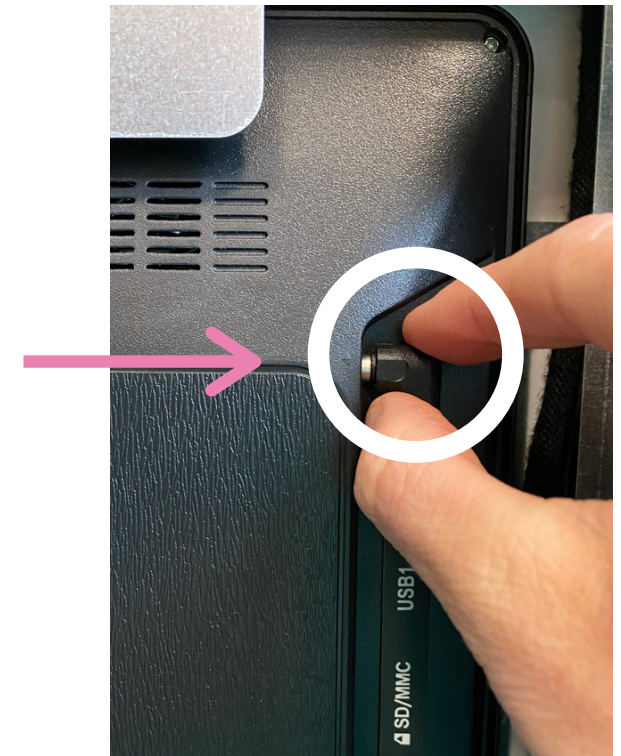
Remove Cover and disconnect Loom



4 - UNPLUG DIGITAL MEDIA SCREEN



Unplug power cable
from digital media
screen



5 - REMOVE FLUSH COVER



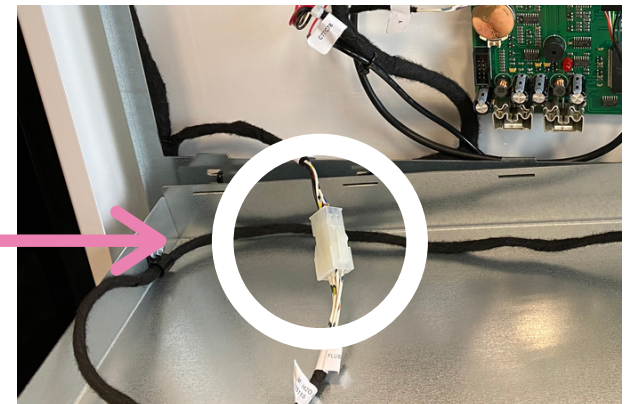
Unscrew Cover



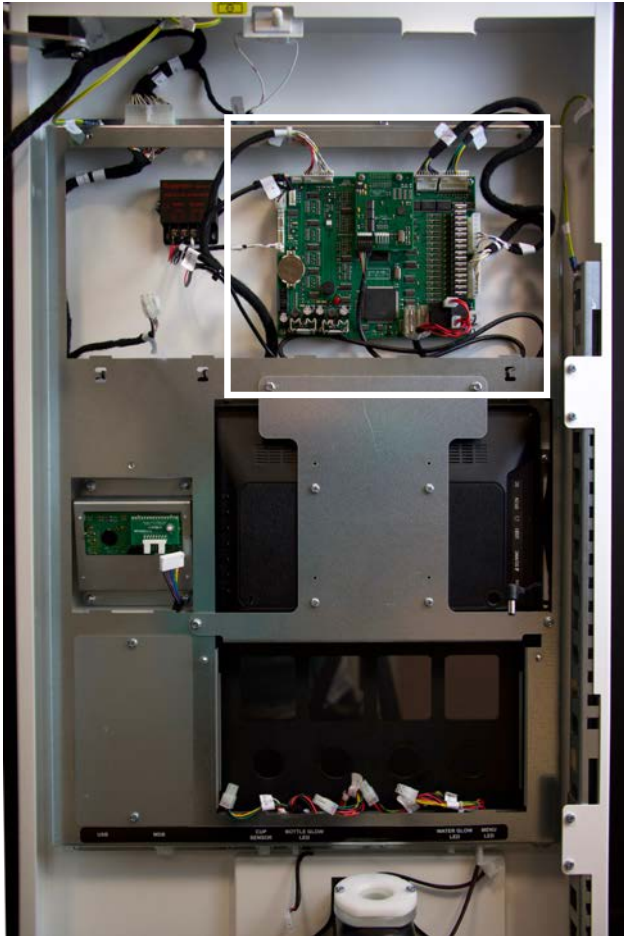
Remove Cover



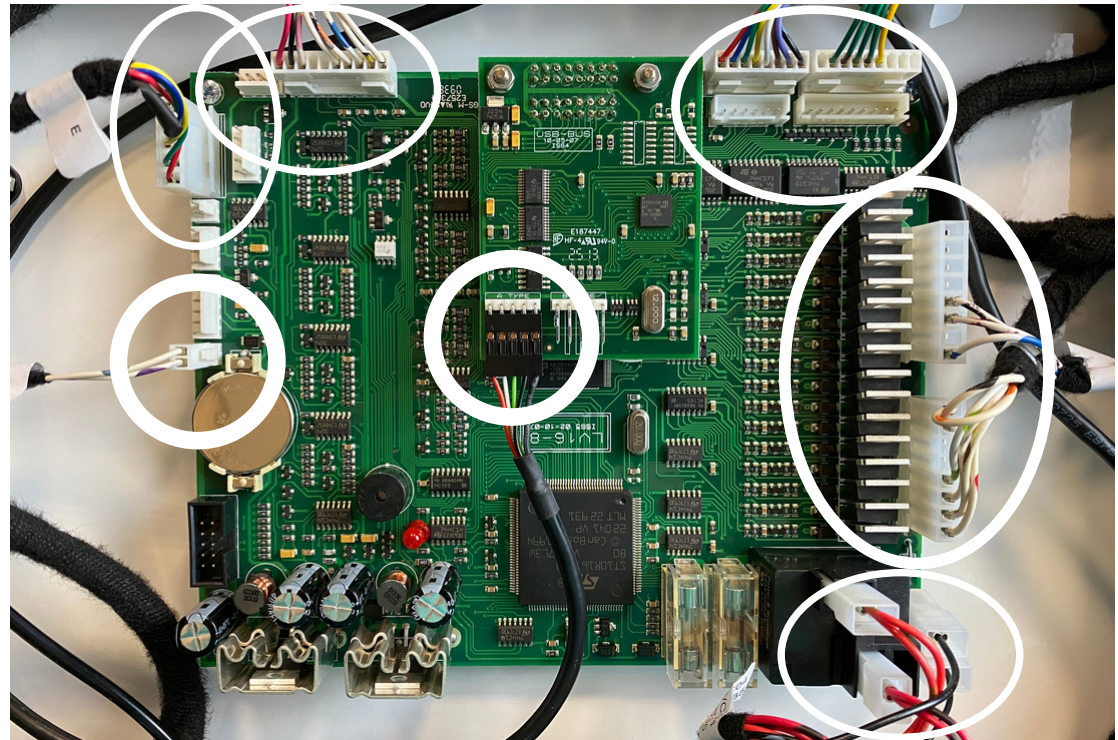
Unplug Loom



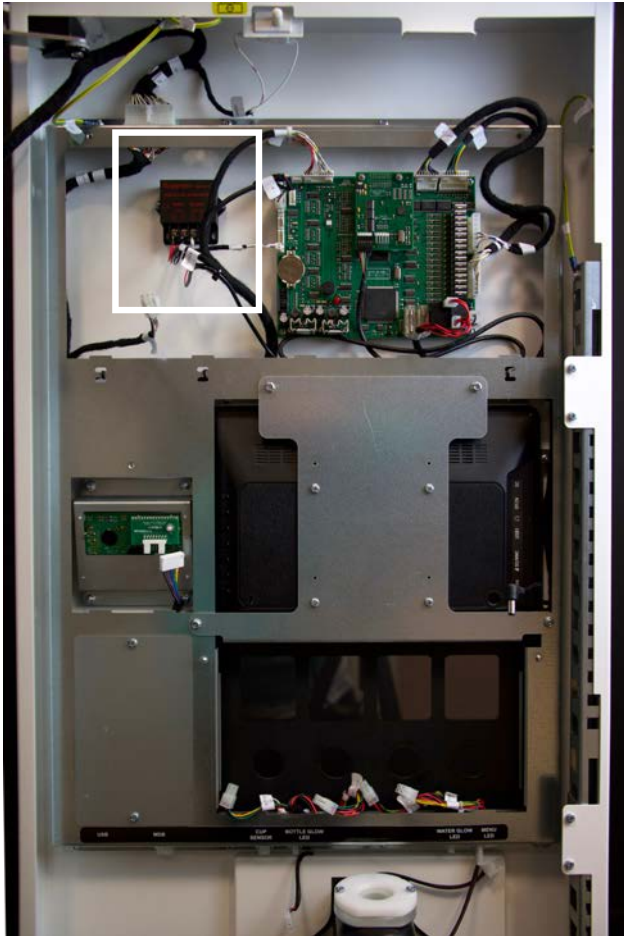
6 - UNPLUG MAIN BOARD



Disconnect looms as shown



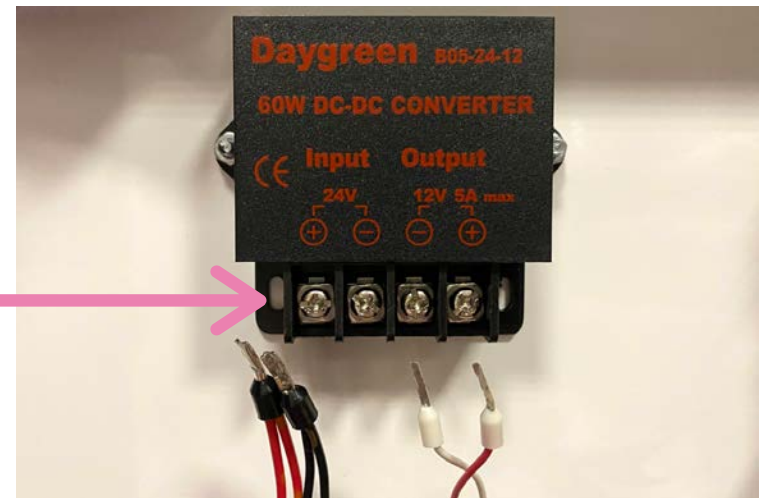
7 - DISCONNECT CONVERTOR



Loosen screws



Remove
connectors



8 - UNPLUG FRAME



Unplug Loom



Remove Earth Cable



Unplug Looms



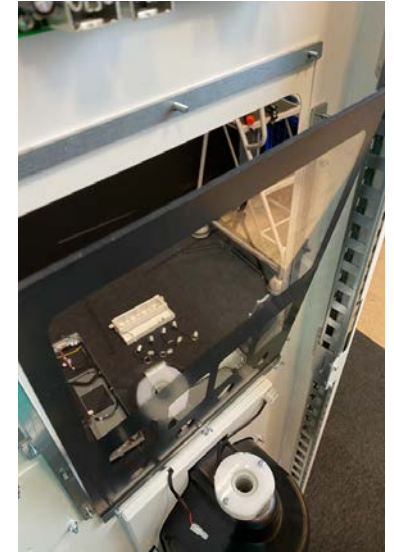
9 - REMOVE METAL FRAME



Remove Frame
Bolts



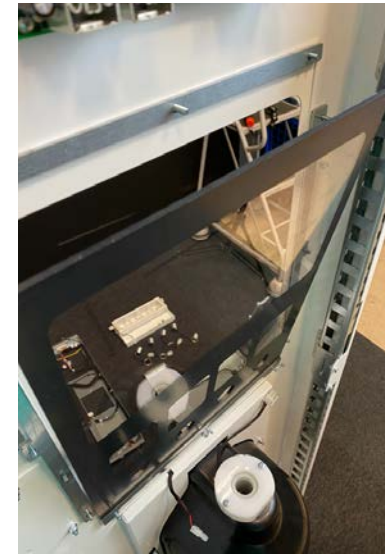
10 - UNBOLT SCREEN PACKERS



Unbolt Screen
Packers and
remove - loosen
middle bottom
bolt but leave
in place



11 - REPLACE FASCIA

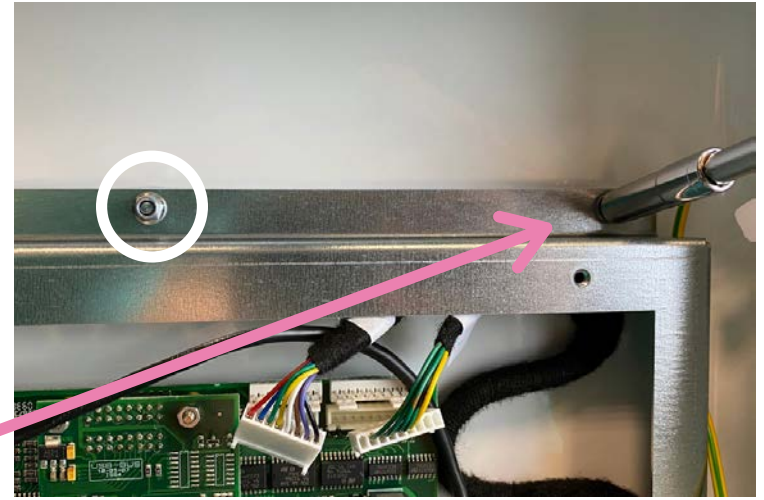


- Remove plastic from back and front (keep front plastic)
- Slide fascia between bottom screen packer - bolt back in
- Replace all screen packers and bolt back into place

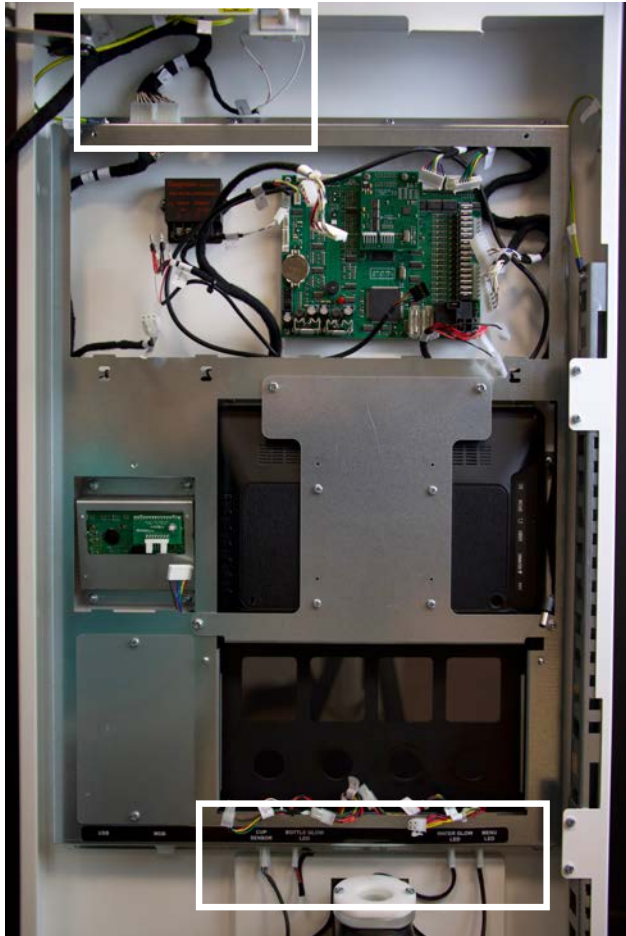
12 - REPLACE METAL FRAME



Replace Frame
Bolts -
ensure all looms
are free of frame



13 - REPLACE DOOR CABLES



Plug in Loom



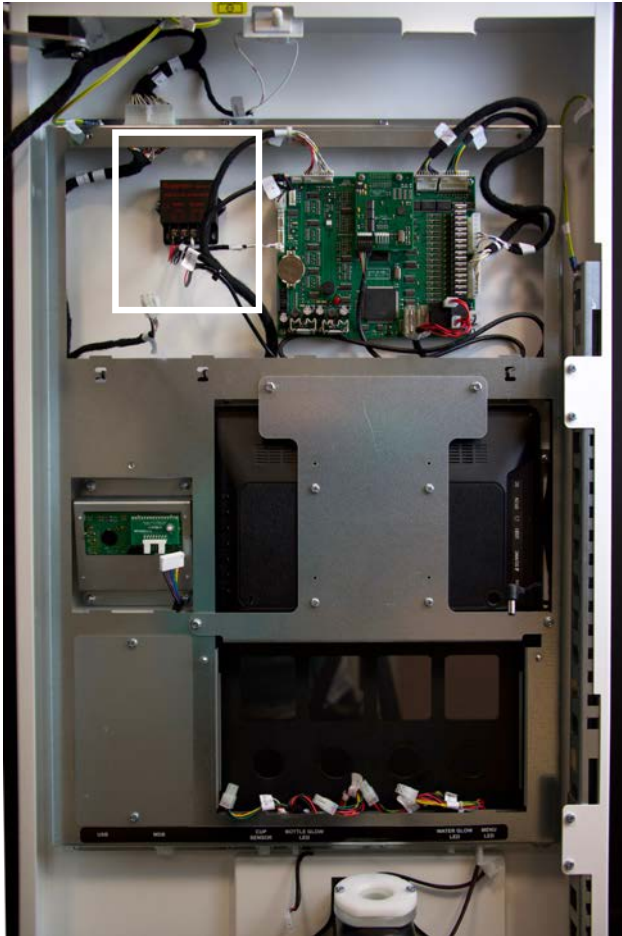
Reattach Earth Cable



Plug Looms back into frame



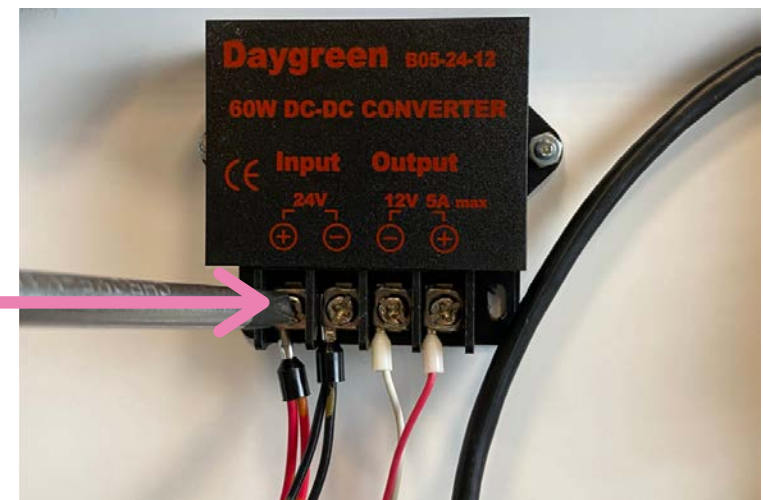
14- RECONNECT CONVERTOR



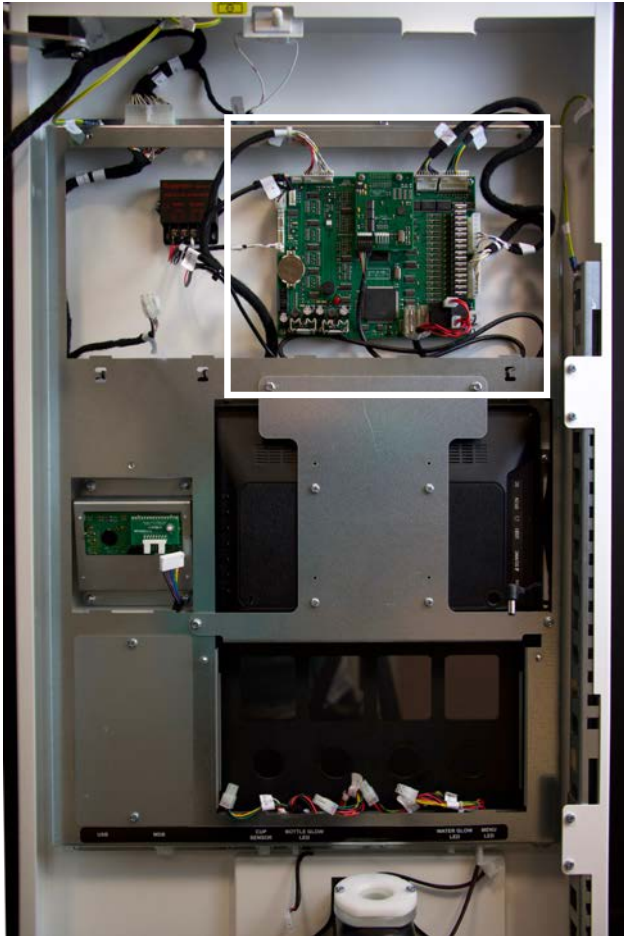
Attach Connectors



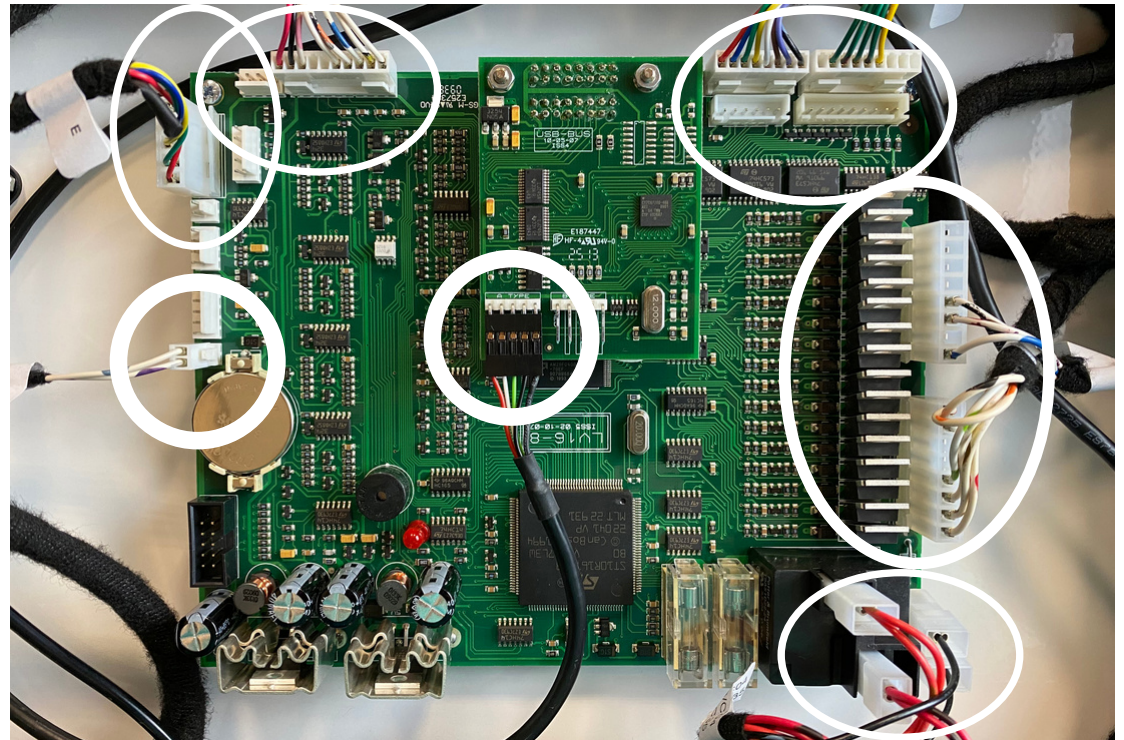
Tighten Screws



15 - PLUG MAIN BOARD IN



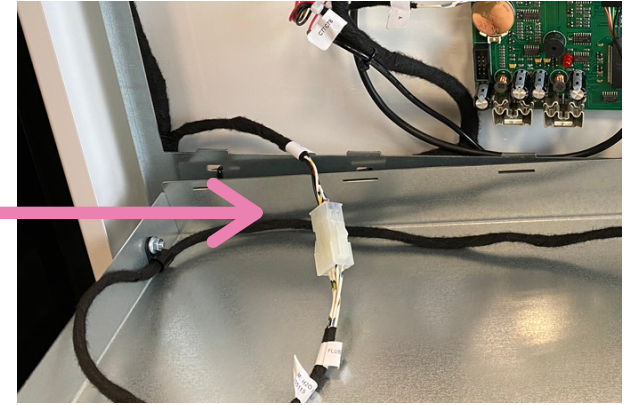
Connect lumps as shown



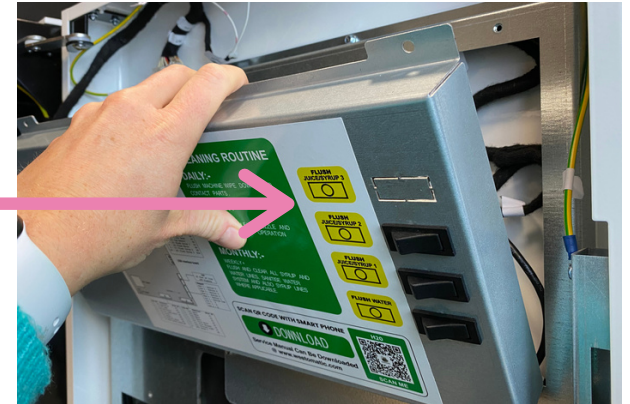
16 - REPLACE FLUSH COVER



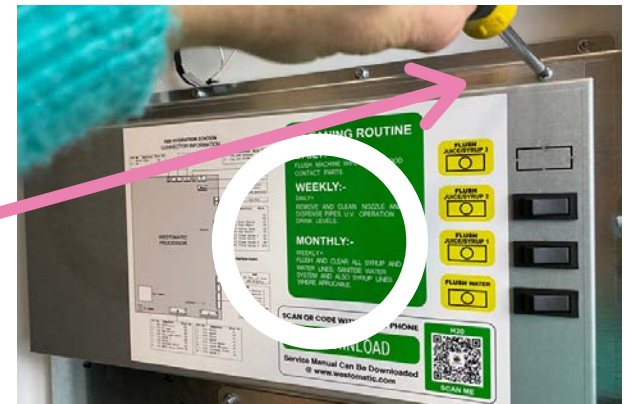
Attach Loom



Replace Cover



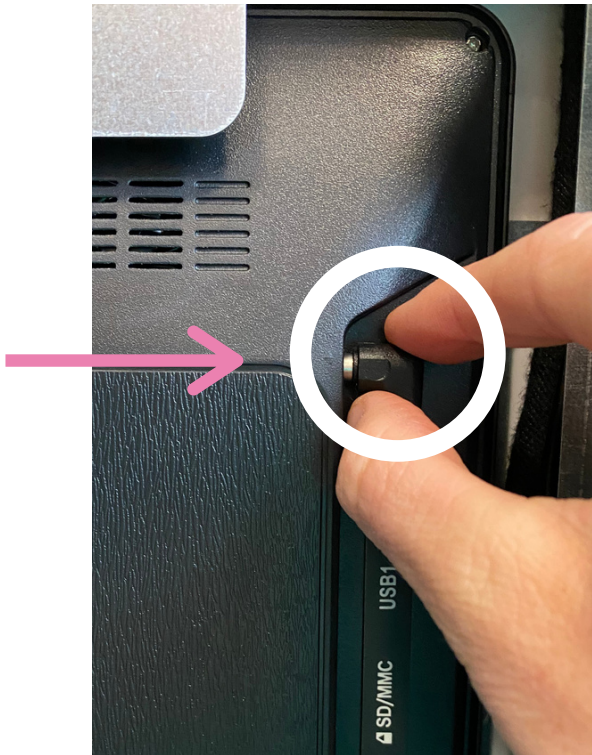
Replace Screws



17 - PLUG IN DIGITAL MEDIA SCREEN



Plug in power cable from digital media screen



18 - REPLACE LCD COVER



Connect Loom and
replace cover



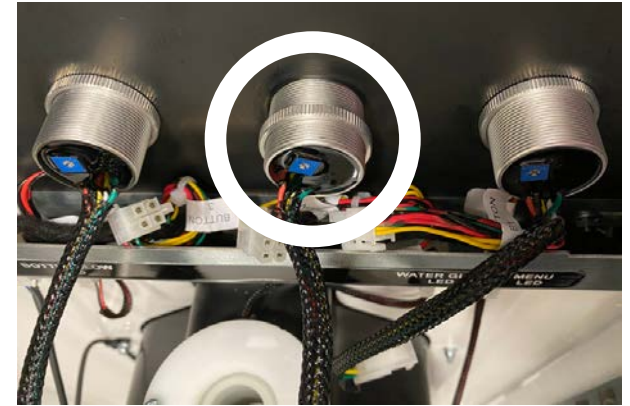
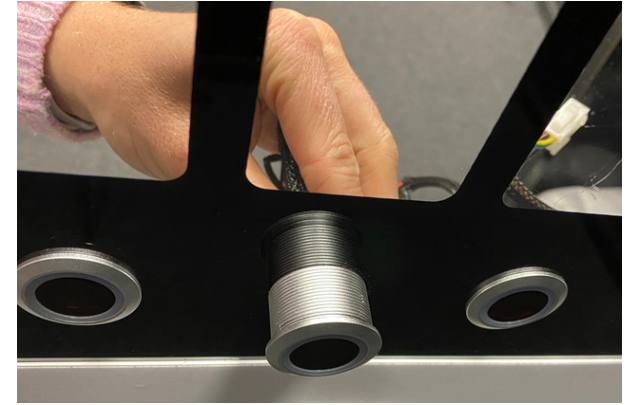
19 - REPLACE BUTTONS



Replace button
from front

Screw Washers on x 4

Reconnect Looms x 4



20- REPLACE LIGHTBOX



Replace Lightbox →



Screw washers on →



Replace menu LED loom



CONTACT



Westomatic Vending
Services Ltd,
Units 7 - 8 Forde Court,
Block 4 Forde Road,
Newton Abbot,
TQ12 4BT

westomatic
make it happen



+44 (0)1626 323100



sales@westomatic.com



www.westomatic.com